

# WORKHOLDING & TOOLING SOLUTIONS

THE  
BEST.



The Best Workholding.

[www.kitagawa-usa.com](http://www.kitagawa-usa.com)

## A.J. Rod Company: Kitagawa NorthTech Master Distributor for Workholding & Tooling in Texas & Louisiana



NEW  
LOWER  
PRICES

AJ Rod has the depth of machine tool and cutting tool industry knowledge and expertise to be a Kitagawa NorthTech master distributor. The company offer customers a comprehensive array of Chucks, Workholding and Tooling solutions:

- Standard, Advanced & Customized Chucks
- Quick Change Collet Chucks
- Smart Grip 5 Axis Workholding Solutions
- Angle Heads and Slimline Shrink-fit Tooling
- Oil & Gas Chucks & Boring Mill Jaws
- Custom Engineered Turning & Prismatic Workholding
- Turning & Grinding Steady Rests
- Automated Pallet Systems, Robotic Grippers & Hand Changers
- Hydraulic Cylinders
- Work Grippers
- NC Rotary Tables
- Digital Gripping Force Analyzer Kit and Software
- Tri-Kote Chuck Grease & Accessories
- In-House Repair & Rebuild Services in USA Facility



Get the industry's most popular Power Chuck:  
Kitagawa's "Big Bore" BB-200 Series Power  
Chuck available from 6" - 21" in diameter.  
2 Jaw configuration also available.



**A.J. ROD**  
COMPANY, LTD.

Locations:

**A.J. Rod - Houston**  
6714 Brittmoore Rd  
Houston, TX 77041  
1-713-921-6111

**A.J. Rod - Grand Prairie**  
1470 Post & Paddock Lane  
Grand Prairie, Texas 75050  
1-972-206-2424

**A.J. Rod - New Braunfels**  
1644 IH 35 North  
New Braunfels, Texas 78130  
1-830-629-0004

[www.ajrodco.com](http://www.ajrodco.com)

# ONE SOURCE FOR TURNING & MILLING

THE  
BEST.

## Kitagawa's Broad Line of Workholding & Tooling Products Available at A.J. Rod



BR Power Chucks



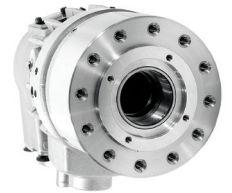
Quick Change Chucks



Quick Change Collet Chucks



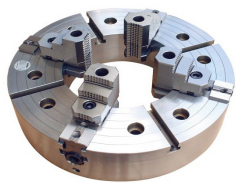
UPR Air Chuck



F Hydraulic Cylinder



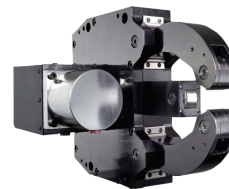
31/32 Oil & Gas  
3 Jaw Chuck



41/42 Oil & Gas 4 Jaw  
Independent Chuck



BM-4T Boring Mill Jaws



FRU/FRC Work Rests



Chuck Grease & Accessories



MK Series NC Rotary Table



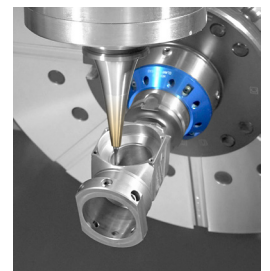
Right Angle Heads



Slimline Shrink-Fit Holders  
& Collet Chucks



Slimline Mono &  
Mono Curve Tooling



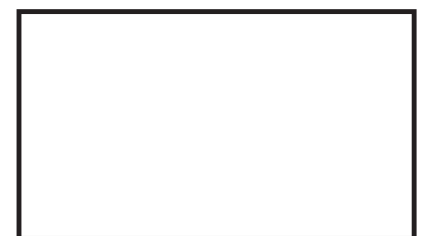
Smart Grip  
5 Axis Workholding

Please consult our website at [www.kitagawa-usa.com](http://www.kitagawa-usa.com) to see our entire offering of Workholding & Tooling solutions.



**A.J. ROD**  
COMPANY, LTD.

1.800.392.3714



Distributed by:

[www.ajrodco.com](http://www.ajrodco.com)